



## Orpheo

### Custom software for Orphie cameras

All camera parameters configurable from a single software

→ Bitrate, size of stream, network management...

Other additional features

→ Digital zoom, snapshot, record...



Orphiecam 300

### About the company

For 45 years, i2S has been the expert in high-quality image capture and processing, applied to most complex and challenging imaging projects in various fields, but also growing a unique know-how to become the leader in subsea imaging technology that became a dedicated business unit called Orphie.

# Orphiecam 300

The best choice for your inspections



At least x2 visibility distance



Real time processing



Low Latency



Easy to use

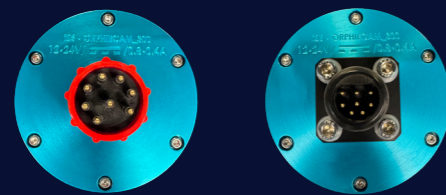
## Technical specifications Orphiecam 300

### Electrical

Sensor	2/3" CMOS color sensor
Optical resolution	1224 x 1024
Frame rate	25 fps
Latency	~200ms
FOV	Air : 86°(D) / 75°(H) / 58°(V) Water : 62°(D) / 54°(H) / 40°(V)

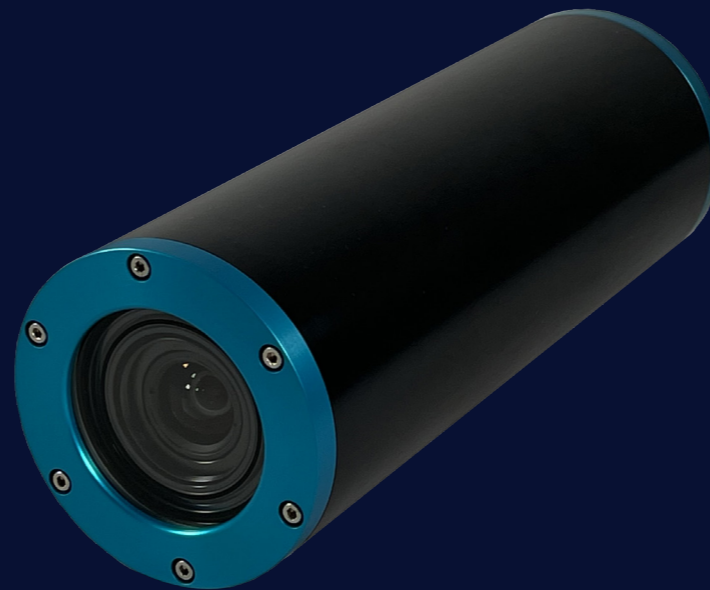
### Optical & video

Input Voltage	12-32V
Power	13W maximum
Data transmission	Ethernet 100BASE-T (100Mbit/s)
Bandwith	12Mbits/s maximum
Operating temperature	0°C to 35°C
Standard connector	Glenair G55 Aluminium MacArtney DBH8M



### Mechanical

Depth rating	300m (984ft)
Housing material	Anodized aluminium
Lens material	Tempered Borofloat
Dimensions (without connector)	L=254.5mm ; ø=90mm
Weight (air/water)	2.3kg/0.6kg



## Orphiecam 300 options

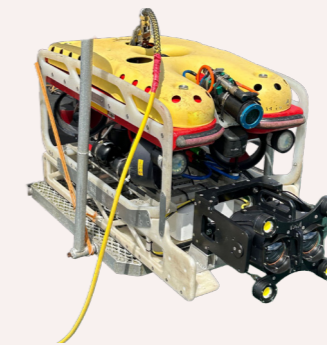
Glenair G55 1m straight tail (right angle on demand)



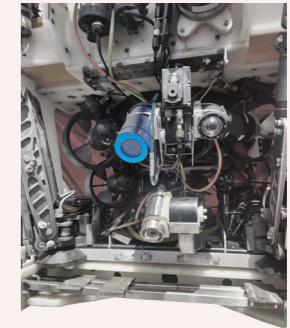
MacArtney DIL8F 1m straight tail



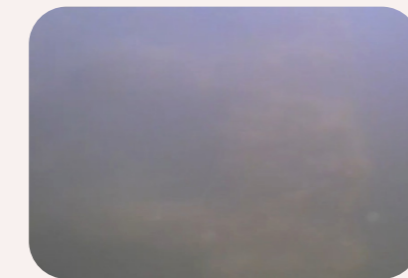
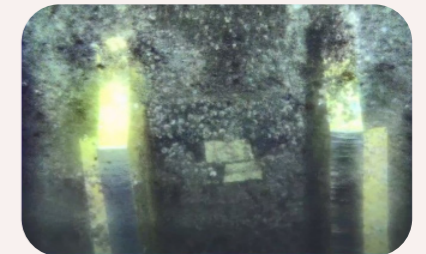
→ Other options and configurations on demand



Standard camera



Orphie camera



«I would definitely recommend the Orphie camera within my own team but definitely not to my competitors because the camera brings us quicker efficiency»

ROV manager