



Orpheo

Custom software for Orphie cameras

All camera parameters configurable from a single software
→ Bitrate, size of stream, network management...

Other additional features
→ Digital zoom, snapshot, record...



About the company

For 45 years, i2S has been the expert in high-quality image capture and processing, applied to most complex and challenging imaging projects in various fields, but also growing a unique know-how to become the leader in subsea imaging technology that became a dedicated business unit called Orphie.

Orphiescaph

The best camera for divers



At least x2 visibility distance



Real time processing



Low latency

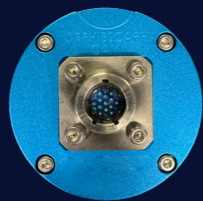


Lightweight and compact

Technical specifications

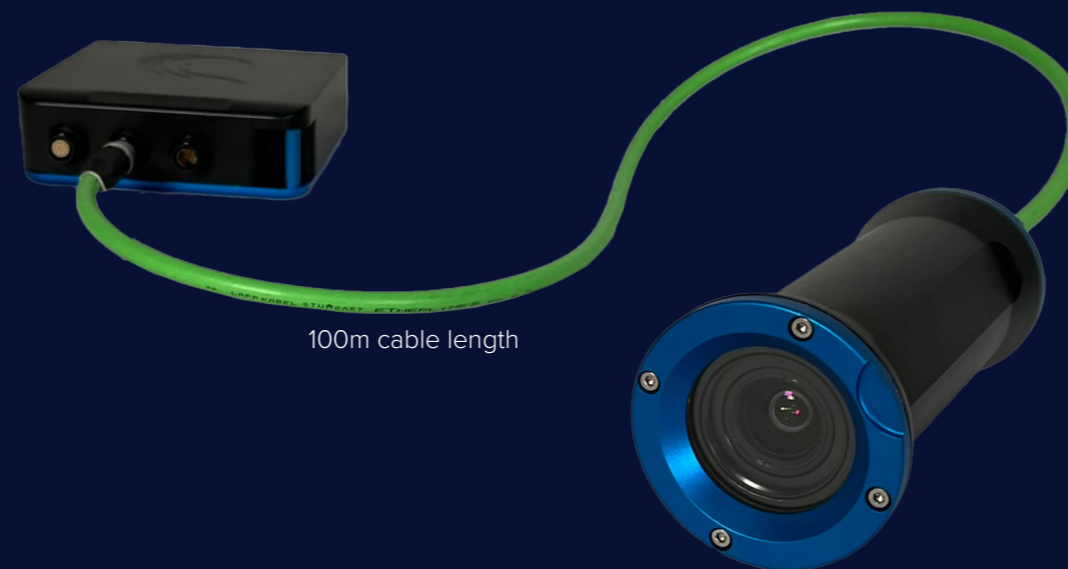
Orphiescaph camera

Sensor	2/3" CMOS color sensor
Optical resolution	1224 x 1024
Frame rate	20 fps
Latency	~200ms
FOV	Air : 86°(D) / 75°(H) / 58°(V) Water : 62°(D) / 54°(H) / 40°(V)
Lens material	Tempered Borofloat
Housing material	Anodized aluminium
Dimensions (without connector)	L=163mm ; ø=72mm
Weight (air/water)	750g/165g
Connector	Aquamouse Glenair



Orphiescaph processing box

Dimensions (without connector)	L=136mm ; W=136mm ; H=44mm
Weight (air)	~990g
Housing material	Anodized aluminium
Power requirements	12-24V
Input	Audio IN
Output	HDMI, Ethernet



Orphiescaph cable

100m cable

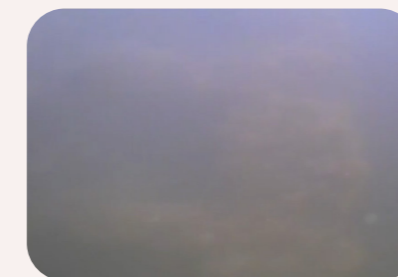
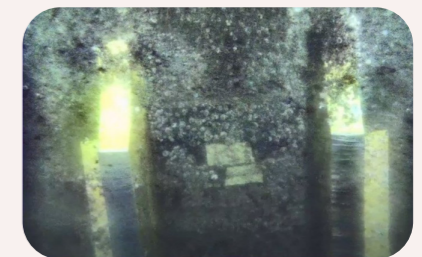


→ Other options and configurations on demand



Standard camera

Orphie camera



«For the surveyor, it's impressive because you can see much more than the diver could see»

Operation supervisor